



OFFICE, PRINCIPAL GOVERNMENT TULSI COLLEGE, ANUPPUR

Affiliated to Awadhesh Pratap Singh University Rewa (MP)

Registered Under Section 2 (F) & 12 (B) of UGC Act

E-mail: hegtdcano@mp.gov.in

9893076404

College Library & E-Library



PRINCIPAL
Govt. Tulsi College Anuppur
Distt. Anuppur (M.P.)



OFFICE, PRINCIPAL GOVERNMENT TULSI COLLEGE, ANUPPUR

Affiliated to Awadhesh Pratap Singh University Rewa (MP)

Registered Under Section 2 (F) & 12 (B) of UGC Act

E-mail: hegtdcano@mp.gov.in

9893076404

Library In charge & Book Lifter



PRINCIPAL
Govt. Tulsi College Anuppur
Distt. Anuppur (M.P.)

Jaithari Road Anuppur, District- Anuppur, Madhya Pradesh, Pin Code:- 484224 www.gtcanuppur.ac.in



OFFICE, PRINCIPAL GOVERNMENT TULSI COLLEGE, ANUPPUR

Affiliated to Awadhesh Pratap Singh University Rewa (MP)

Registered Under Section 2 (F) & 12 (B) of UGC Act

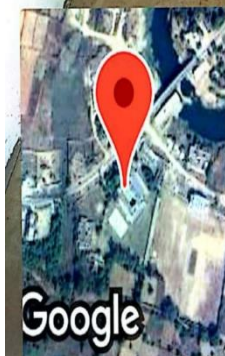
E-mail: hegtdcano@mp.gov.in

9893076404

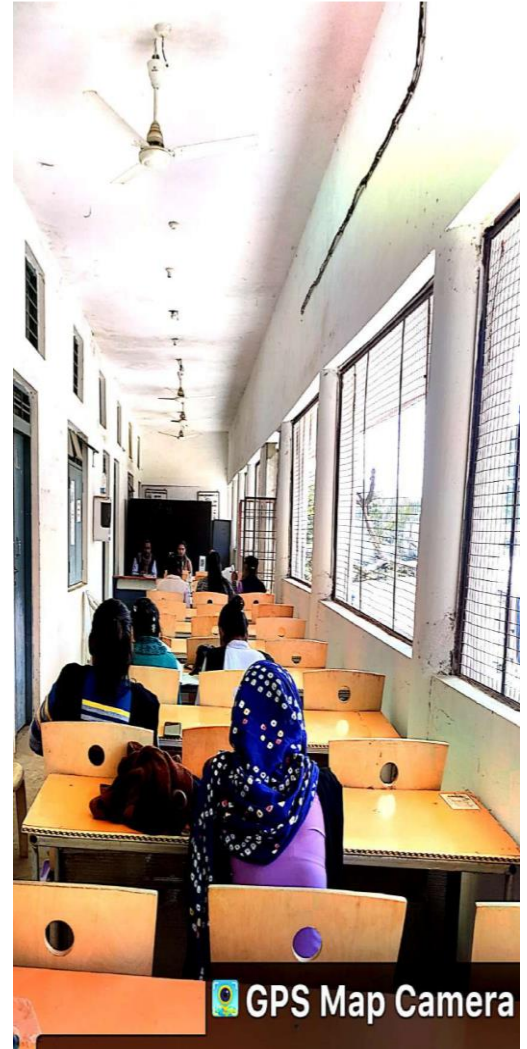
Library Reading Room



GPS Map Camera



Kusmahai, Madhya Pradesh, India
4P67+FGG, Amarkantak Rd, Kusmahai,
Madhya Pradesh 484224, India
Lat 23.11122°
Long 81.713856°
03/02/23 11:51 AM GMT +05:30



GPS Map Camera

Kusmahai, Madhya Pradesh, India
4P67+FGG, Kusmahai, Madhya Pradesh
484224, India
Lat 23.111245°
Long 81.71388°
03/02/23 11:55 AM GMT +05:30

PRINCIPAL
Govt. Tulsi College Anuppur
Distt. Anuppur (M.P.)



OFFICE, PRINCIPAL GOVERNMENT TULSI COLLEGE, ANUPPUR

Affiliated to Awadhesh Pratap Singh University Rewa (MP)

Registered Under Section 2 (F) & 12 (B) of UGC Act

E-mail: hegtdcano@mp.gov.in

9893076404

Reading Room



GPS Map Camera
Kusmahai, Madhya Pradesh, India
4P67+FGG, Amarkantak Rd, Kusmahai,
Madhya Pradesh 484224, India
Lat 23.111278°
Long 81.713826°
03/02/23 11:43 AM GMT +05:30



PRINCIPAL
Govt. Tulsi College Anuppur
Distt. Anuppur (M.P.)



OFFICE, PRINCIPAL GOVERNMENT TULSI COLLEGE, ANUPPUR

Affiliated to Awadhesh Pratap Singh University Rewa (MP)

Registered Under Section 2 (F) & 12 (B) of UGC Act

E-mail: hegtcdcano@mp.gov.in

9893076404

Library Computer Room



PRINCIPAL
Govt. Tulsi College Anuppur
Distt. Anuppur (M.P.)



OFFICE, PRINCIPAL GOVERNMENT TULSI COLLEGE, ANUPPUR

Affiliated to Awadhesh Pratap Singh University Rewa (MP)

Registered Under Section 2 (F) & 12 (B) of UGC Act

E-mail: hegtdcano@mp.gov.in

9893076404



PRINCIPAL
Govt. Tulsi College Anuppur
Distt. Anuppur (M.P.)



OFFICE, PRINCIPAL GOVERNMENT TULSI COLLEGE, ANUPPUR

Affiliated to Awadhesh Pratap Singh University Rewa (MP)

Registered Under Section 2 (F) & 12 (B) of UGC Act

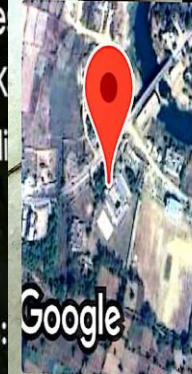
E-mail: hegtdcano@mp.gov.in

9893076404

Library reference Book



GPS Map
Kusmahai, Madhya Prade
4P67+FGG, Amarkantak Rd, K
Madhya Pradesh 484224, Indi
Lat 23.11128°
Long 81.713815°
03/02/23 11:07 AM GMT +05:



GPS Map Camera
Kusmahai, Madhya Pradesh, India
4P67+FGG, Amarkantak Rd, Kusmahai,
Madhya Pradesh 484224, India
Lat 23.111271°
Long 81.71382°
03/02/23 11:07 AM GMT +05:30

PRINCIPAL
Govt. Tulsi College Anuppur
Distt. Anuppur (M.P.)



OFFICE, PRINCIPAL GOVERNMENT TULSI COLLEGE, ANUPPUR

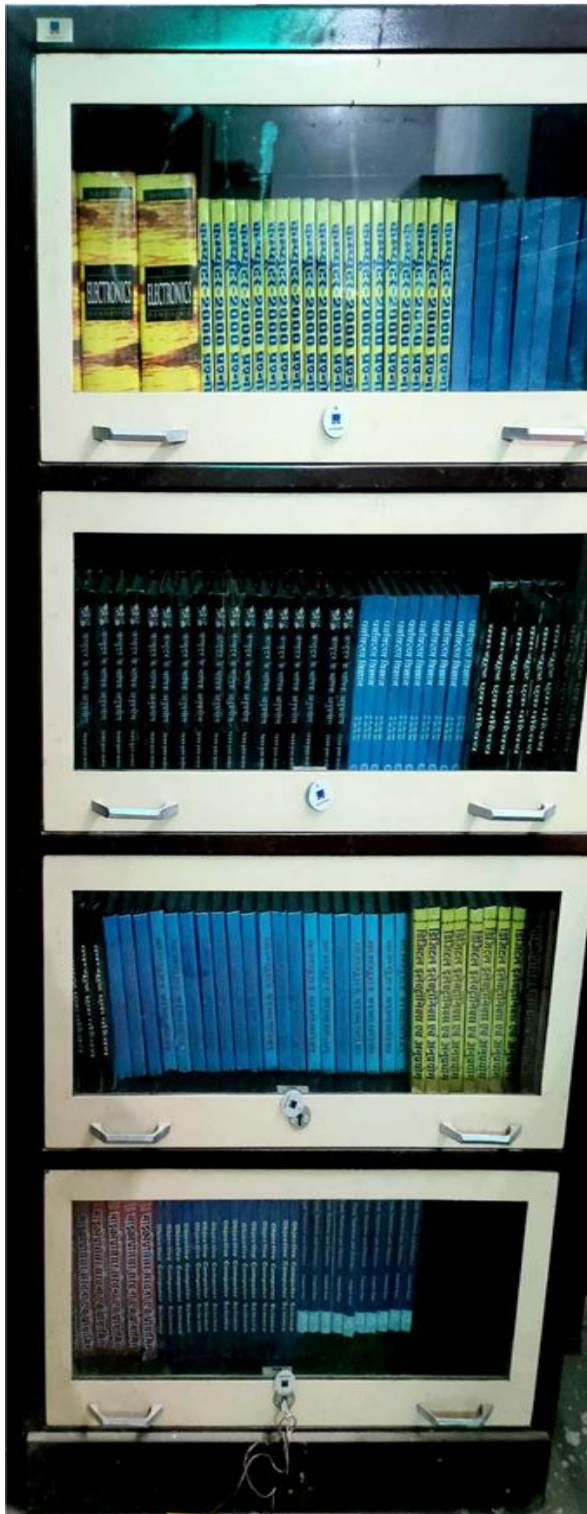
Affiliated to Awadhesh Pratap Singh University Rewa (MP)

Registered Under Section 2 (F) & 12 (B) of UGC Act

E-mail: hegtcdcano@mp.gov.in

9893076404

UGC Books



realme Shot on CT Master

PRINCIPAL
Govt. Tulsi College Anuppur
Distt. Anuppur (M.P.)



OFFICE, PRINCIPAL GOVERNMENT TULSI COLLEGE, ANUPPUR

Affiliated to Awadhesh Pratap Singh University Rewa (MP)

Registered Under Section 2 (F) & 12 (B) of UGC Act

E-mail: hegtcdcano@mp.gov.in

9893076404

Reference Book



PRINCIPAL
Govt. Tulsi College Anuppur
Distt. Anuppur (M.P.)



OFFICE, PRINCIPAL GOVERNMENT TULSI COLLEGE, ANUPPUR

Affiliated to Awadhesh Pratap Singh University Rewa (MP)

Registered Under Section 2 (F) & 12 (B) of UGC Act

E-mail: hegtdcano@mp.gov.in

9893076404

Reference Books



PRINCIPAL
Govt. Tulsi College Anuppur
Distt. Anuppur (M.P.)



OFFICE, PRINCIPAL GOVERNMENT TULSI COLLEGE, ANUPPUR

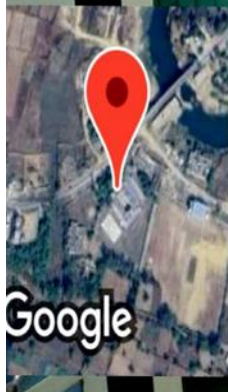
Affiliated to Awadhesh Pratap Singh University Rewa (MP)

Registered Under Section 2 (F) & 12 (B) of UGC Act

E-mail: hegtdcano@mp.gov.in

9893076404

UGC Reference Books



Kusmahai, Madhya Pradesh
4P67+FGG, Amarkantak Rd, Kus
Madhya Pradesh 484224, India
Lat 23.111268°
Long 81.713827°
03/02/23 10:45 AM GMT +05:30

realme Shot on GT Master

PRINCIPAL
Govt. Tulsi College Anuppur
Distt. Anuppur (M.P.)



OFFICE, PRINCIPAL GOVERNMENT TULSI COLLEGE, ANUPPUR

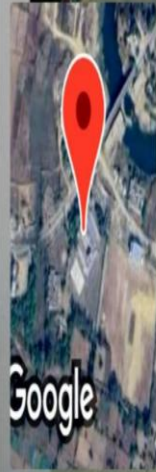
Affiliated to Awadhesh Pratap Singh University Rewa (MP)

Registered Under Section 2 (F) & 12 (B) of UGC Act

E-mail: hegtdcano@mp.gov.in

9893076404

Department Books



Kusmahai, Madhya Pradesh, India
4P67+FGG, Amarkantak Rd, Kusmahai, Madhya
Pradesh 484224, India
Lat 23.111222°
Long 81.713892°
03/02/23 10:32 AM GMT +05:30

PRINCIPAL
Govt. Tulsi College Anuppur
Distt. Anuppur (M.P.)



OFFICE, PRINCIPAL GOVERNMENT TULSI COLLEGE, ANUPPUR

Affiliated to Awadhesh Pratap Singh University Rewa (MP)

Registered Under Section 2 (F) & 12 (B) of UGC Act

E-mail: hegtdcano@mp.gov.in

9893076404

Reference Books



PRINCIPAL
Govt. Tulsi College Anuppur
Distt. Anuppur (M.P.)

Jaithari Road Anuppur, District- Anuppur, Madhya Pradesh, Pin Code:- 484224 www.gtcnuppur.ac.in



OFFICE, PRINCIPAL GOVERNMENT TULSI COLLEGE, ANUPPUR

Affiliated to Awadhesh Pratap Singh University Rewa (MP)

Registered Under Section 2 (F) & 12 (B) of UGC Act

E-mail: hegtcdcano@mp.gov.in

9893076404

Library Department Book




PRINCIPAL
Govt. Tulsi College Anuppur
Distt. Anuppur (M.P.)

Jaithari Road Anuppur, District- Anuppur, Madhya Pradesh, Pin Code:- 484224 www.gtcanuppur.ac.in